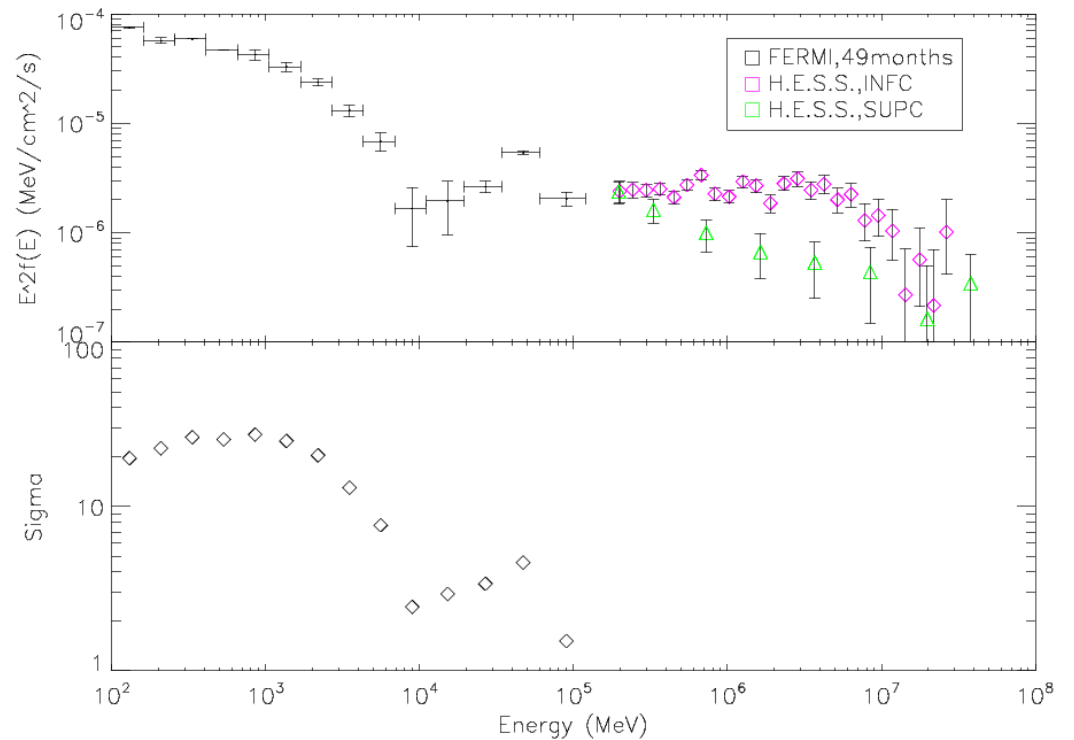
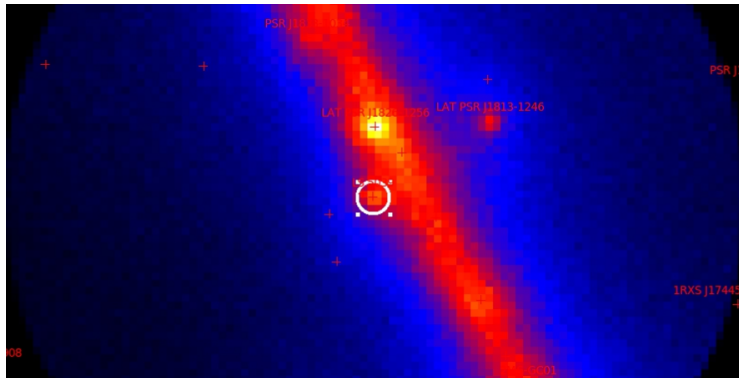
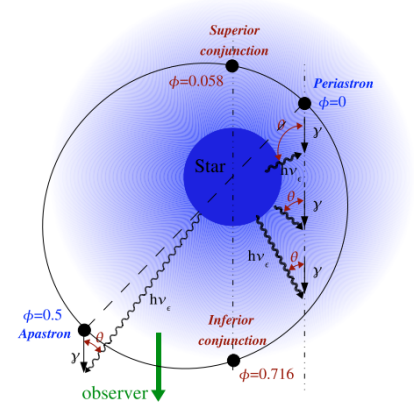


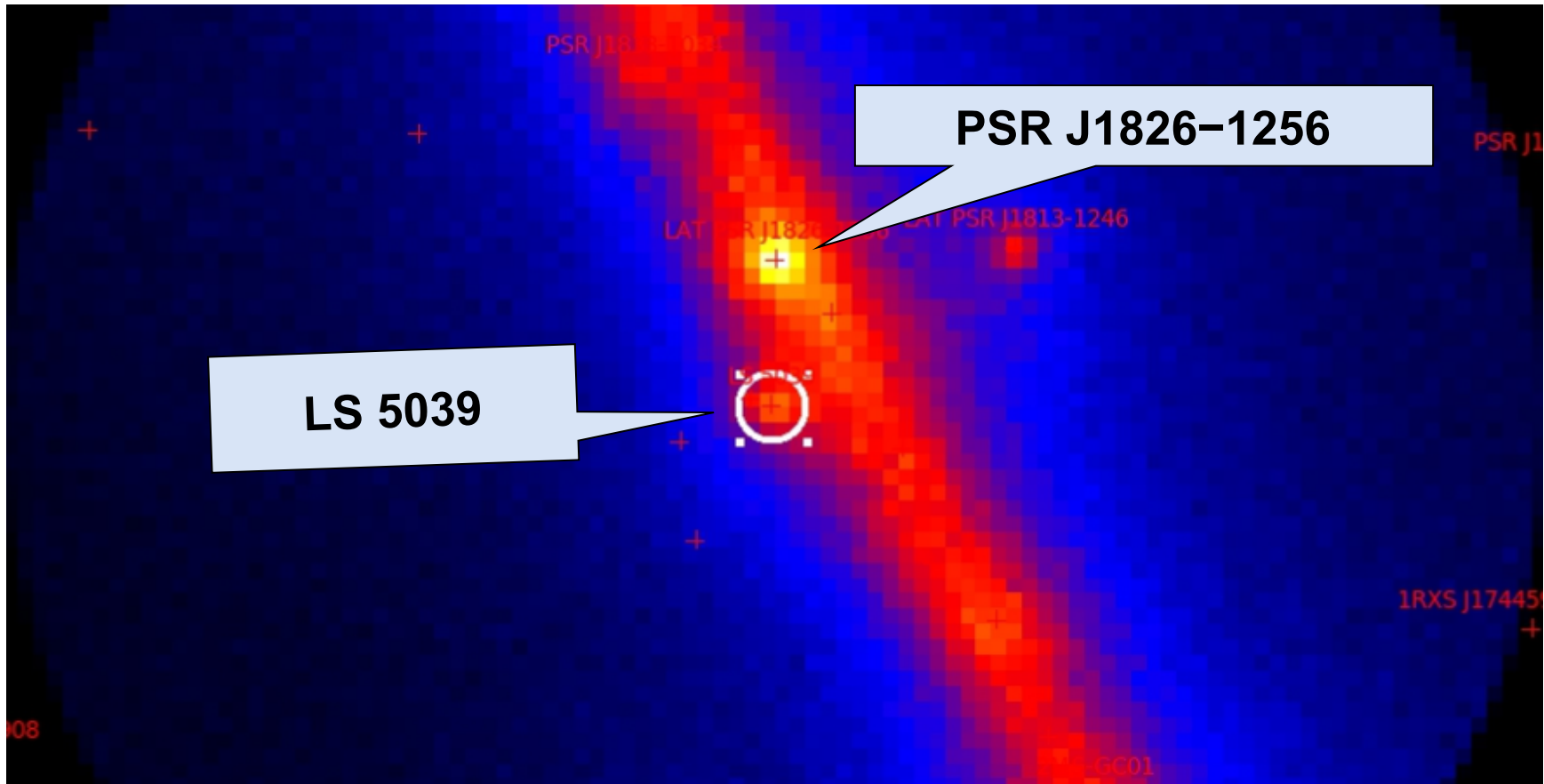
SED of LS 5039

DATA: Fermi-LAT 4.7 years
 ENERGY: 100MeV - 100GeV
 ROI: 10 degrees
 BINS: 15 (13 convergence)

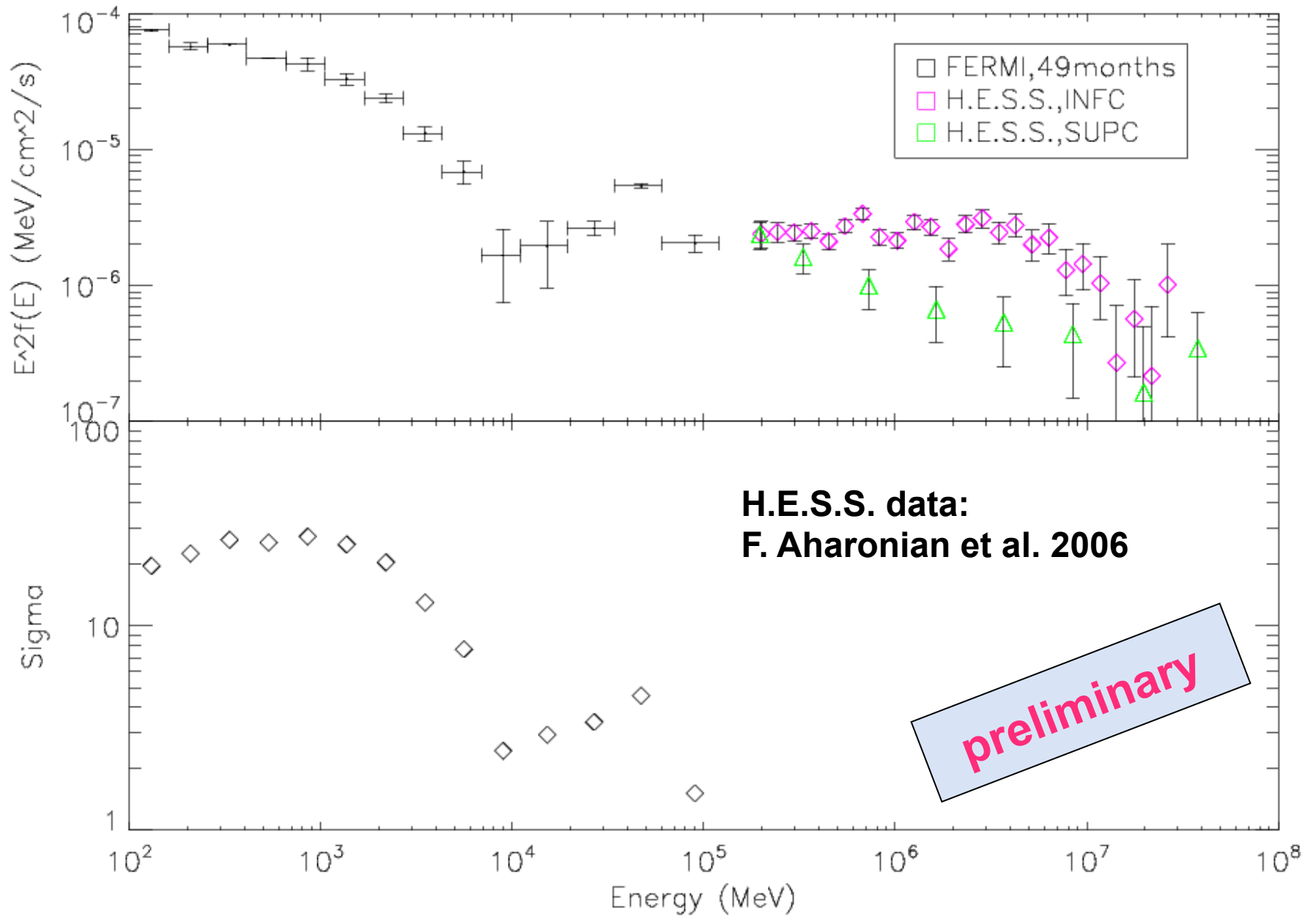
Jianeng Zhou @ PMO



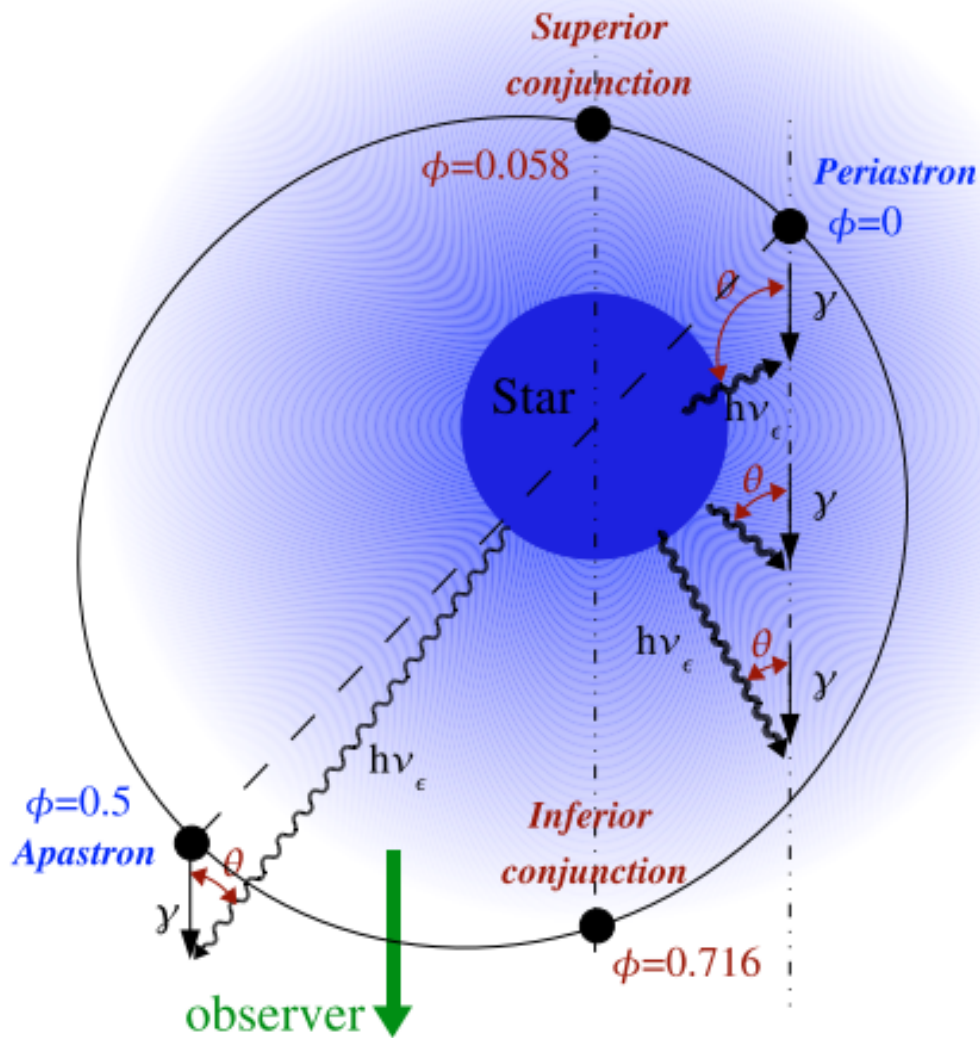
Counts map of LS 5039



SED of LS 5039



The orbital geometry of LS 5039



SUPC ($\phi < 0.45$ & $0.9 < \phi$)

INFC ($0.45 < \phi < 0.9$)

Aharonian et al. 6006